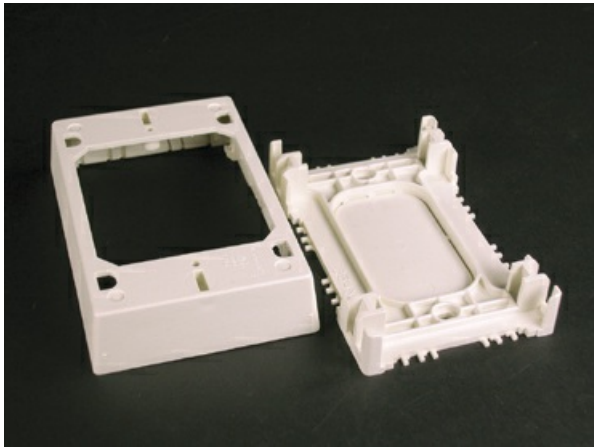




Wiremold
400/800/2300/2300D Shallow Device/Extension Box Fitting
Part No. 2348S/51



For shallow switches and receptacles. Base has rectangular KO.

Features & Benefits

For shallow switches and receptacles. Base has rectangular KO.

Specifications

General Info

Product Line	Wiremold	UPC Number	786776050424
Country Of Origin	United States	Application Sector	Residential/Commercial

Standard	cULus Listed Raceway: File E90378 Guide RJTX. Complies with flammability requirements of UL-5A. Fittings: File E90377 Guide RJYT. Meets Article 388 of NEC. UL Listed for up to 600V. Meets Section 12-2600 of CEC.	Type	Raceway
----------	---	------	---------

Dimensions

Product Width US	3.0 in	Product Depth US	1.0 in
Product Length US	4.75 in		

Listing Agencies / 3rd Party Agencies

cULus ListingNumber	E90377	cULus Listed	Yes
---------------------	--------	--------------	-----

Buy American Act Compliance

NAFTA	Yes
-------	-----

Additional Information

RoHS Conformant	Yes	Product Environmental Profile	Yes
-----------------	-----	-------------------------------	-----

Technical Information

Voltage	600.0 V
---------	---------
