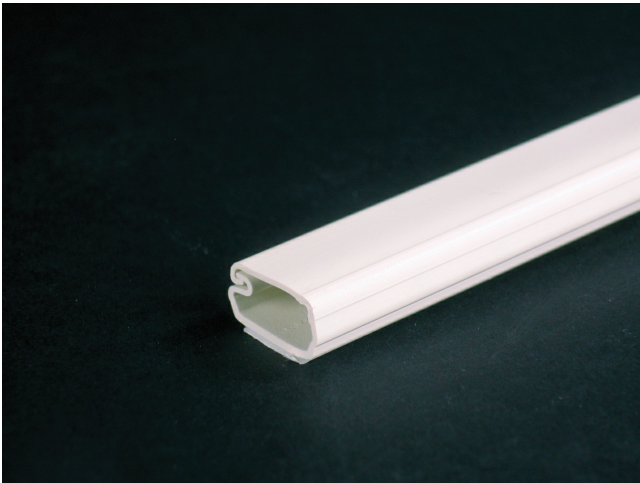




Wiremold
Uniduct 2700 Series One-Piece Latching Raceway Fitting
Part No. 2700L8-WH



2700 Series Co-extruded design, smooth plastic finish with adhesive backing. Available in 8' (2.44m) lengths, packed 160' (48.8m) per carton.

Features & Benefits

2700 Series Co-extruded design, smooth plastic finish with adhesive backing. Available in 8' (2.44m) lengths, packed 160' (48.8m) per carton.

Specifications

General Info

| | | | |
|-------------------|---|--------------------|------------------------|
| Product Line | Wiremold | UPC Number | 786776521689 |
| Country Of Origin | United States | Application Sector | Residential/Commercial |
| Standard | Uniduct Series Raceway is not UL Listed and is only designed for use in protecting electrical cords and low voltage wiring and cabling. | Type | Raceway |

Dimensions

| | | | |
|-------------------|----------|-------------------|---------|
| Product Height US | 0.375 in | Product Length US | 0.75 in |
|-------------------|----------|-------------------|---------|

Buy American Act Compliance

| | |
|-------|-----|
| NAFTA | Yes |
|-------|-----|

Additional Information

| | | | |
|-----------------|-----|-------------------------------|-----|
| RoHS Conformant | Yes | Product Environmental Profile | Yes |
|-----------------|-----|-------------------------------|-----|