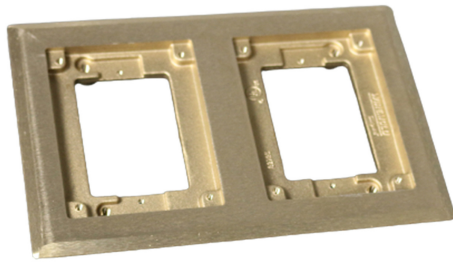




**Wiremold  
Flange**  
Part No. 827C



Two-gang brass carpet flange. For use on 880S2, 880M2, 880CS2-1, and 880CM2-1 Floor Boxes. NOTE: Not available in Brushed Aluminum finish. Brass cover plates can only be used with brass flanges. Brass cover plates can only be used with brass flanges. Brushed aluminum flanges come with beveled edges.

## Features & Benefits

Two-gang brass carpet flange. For use on 880S2, 880M2, 880CS2-1, and 880CM2-1 Floor Boxes. NOTE: Not available in Brushed Aluminum finish. Brass cover plates can only be used with brass flanges. Brass cover plates can only be used with brass flanges. Brushed aluminum flanges come with beveled edges.

## Specifications

### General Info

Product Line	Wiremold	UPC Number	786564266457
Country Of Origin	China	Construction	Not Assembled
Application Sector	Commercial	Standard	cULus Listed Metallic Outlet Boxes: File E2961 Guide QCIT Meets Article 314.27(C) of NEC.
Type	Floor Box		

### Dimensions

Product Width US	6.0 in	Product Depth US	9.25 in
Product Height US	0.63 in		

### Listing Agencies / 3rd Party Agencies

cULus ListingNumber	E2961	cULus Listed	Yes
---------------------	-------	--------------	-----

---

## Buy American Act Compliance

---

NAFTA	Yes
-------	-----

---

## Additional Information

---

RoHS Conformant	Yes	Product Environmental Profile	Yes
-----------------	-----	-------------------------------	-----

---