

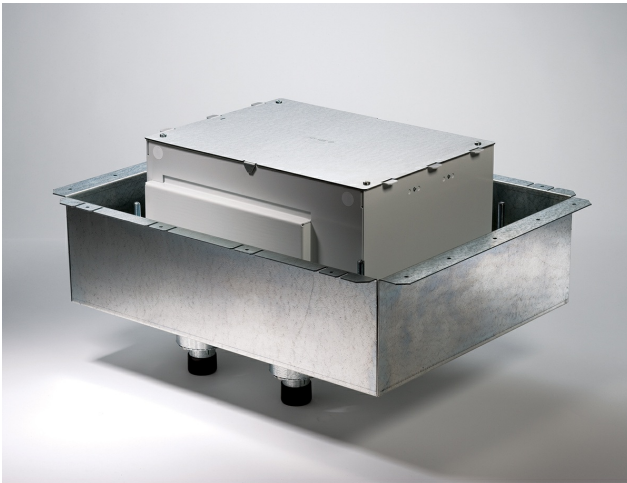


## Wiremold Evolution™ Series Eight Gang Fire-Classified Floor Box Part No. EFB8S-FC

"The Evolution™ Series Eight Gang Fire Classified Floor Box has been designed to be installed in above grade concrete floors while maintaining the fire classification of the floor. This box is classified to be used in 2-hour fire rated floors. Designed to accept standard size wall plates. Box comes complete with all components needed for initial installation. Included components are:

protective/disposable cover, tunnel system for connecting the two modules of compartments, fire classified pan, two (2) removable modules, four (4) 1 1/4 intumescent conduit feeds and two (2) cable management guides. Items not included with the box and sold separately are: receptacles, communication jacks, and A/V devices and device plates. NOTE: For use on bare (polished) concrete or terrazzo floors EFB610-CTR must be used. (Sold separately.)

Designed for new construction applications. Consult structural engineer before making cuts into decking. Add additional supports as instructed by the structural engineer. Outlet Boxes and Fittings Classified for Fire Resistance Wiremold (R8209) Type EFB6S-FC, EFB8S-FC and EFB10S-FC preset electrical insert for use in 2-hour fire rated D900 Series Floor-Ceiling designs constructed with nominal 2 inch inch or 3 inch inch deep fluted steel floor units having a nominal 5 inch inch wide valley and crests spaced 12 inch inch OC, with a minimum 3 1/4 inch inch (83mm) thickness of structural concrete topping. The assembly preset electrical insert with floor plate kit and service activations fitting will not reduce the 2-hour fire rating of the floor assembly when installed in accordance with the installation instructions accompanying the preset electrical insert and when the preset electrical insert are spaced 2' (0.61m) OC with not more than one unit per 4 square feet (0.37m<sup>2</sup>) of floor area in each span."



## Features & Benefits

"The Evolution™ Series Eight Gang Fire Classified Floor Box has been designed to be installed in above grade concrete floors while maintaining the fire classification of the floor. This box is classified to be used in 2-hour fire rated floors. Designed to accept standard size wall plates. Box comes complete with all components needed for initial installation. Included components are: protective/disposable cover, tunnel system for connecting the two modules of compartments, fire classified pan, two (2) removable modules, four (4) 1 1/4 intumescent conduit feeds and two (2) cable management guides. Items not included with the box and sold separately are: receptacles, communication jacks, and A/V devices and device plates. NOTE: For use on bare (polished) concrete or terrazzo floors EFB610-CTR must be used. (Sold separately.) Designed for new construction applications. Consult structural engineer before making cuts into decking. Add additional supports as instructed by the structural engineer. Outlet Boxes and Fittings Classified for Fire Resistance Wiremold (R8209) Type EFB6S-FC, EFB8S-FC and EFB10S-FC preset electrical insert for use in 2-hour fire rated D900 Series Floor-Ceiling designs constructed with nominal 2 inch inch or 3 inch inch deep fluted steel floor units having a nominal 5 inch inch wide valley and crests spaced 12 inch inch OC, with a minimum 3 1/4 inch inch (83mm) thickness of structural concrete topping. The assembly preset electrical insert with floor plate kit and service activations fitting will not reduce the 2-hour fire rating of the floor assembly when installed in accordance with the installation instructions accompanying the preset electrical insert and when the preset electrical insert are spaced 2' (0.61m) OC with not more than one unit per 4 square feet (0.37m<sup>2</sup>) of floor area in each span."

## Specifications

## General Info

Product Line	Wiremold	Color	White
UPC Number	786776176759	Country Of Origin	United States
Construction	Assembled	Application Sector	Commercial
Standard	cULus Listed Metallic Outlet Boxes: File E2961 Guide QCIT Meets Article 314.27(C) of NEC.	Type	Floor Box

## Dimensions

Product Width US	19.29 in	Product Weight US	49.09 lb
Product Volume US	6991.08 cu in	Product Depth US	24.79 in
Product Height US	14.63 in	Cubic Capacity	27.5 cu in

## Listing Agencies / 3rd Party Agencies

cULus ListingNumber	E2961	cULus Listed	Yes
---------------------	-------	--------------	-----

## Additional Information

RoHS Conformant	Yes
-----------------	-----

## Technical Information

Cable Entry	Conduit Stubs	Number of Outlets	0
-------------	---------------	-------------------	---