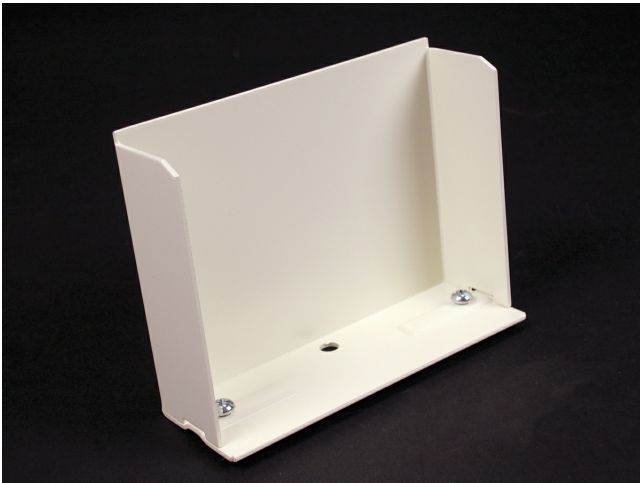




Wiremold
Wiremold 6000 Series Blank End Fitting, Gray
Part No. G6010B



The Wiremold 6000 Series Raceway can be used divided for separate wiring circuits or multi-service applications. For large cabling installations, 6000 can be used undivided as headers and feeders or to bring wiring to a specified location. 6000 Series Raceway is ideal for all applications requiring a high cable capacity, dual service steel raceway. Commercial, institutional, and industrial applications all benefit from the 6000 Series rigid steel construction and durable Ivory ScuffCoat finish. 6000 Series Raceway is also ideal for municipalities that require either all steel construction or prohibit nonmetallic cable management systems.

Features & Benefits

This product meets the material restrictions of RoHS

Specifications

General Info

Product Line	Wiremold	Color	Gray
UPC Number	786776088007	Country Of Origin	United States
Application Sector	Commercial	Standard	cULus Listed Surface Metal Raceway: File E41751: Guide RJPR/RJPR7
Type	Raceway		

Dimensions

Product Width US	4.75 in	Product Weight US	0.61 lb
Product Volume US	28.11 cu in	Product Depth US	3.63 in
Product Height US	1.63 in		

Listing Agencies / 3rd Party Agencies

cULus ListingNumber	E41751	cULus Listed	Yes
---------------------	--------	--------------	-----

Buy American Act Compliance

NAFTA	Yes
-------	-----

Additional Information

RoHS Conformant	Yes	Product Environmental Profile	Yes
-----------------	-----	-------------------------------	-----

Technical Information

Voltage	600.0 V
---------	---------
