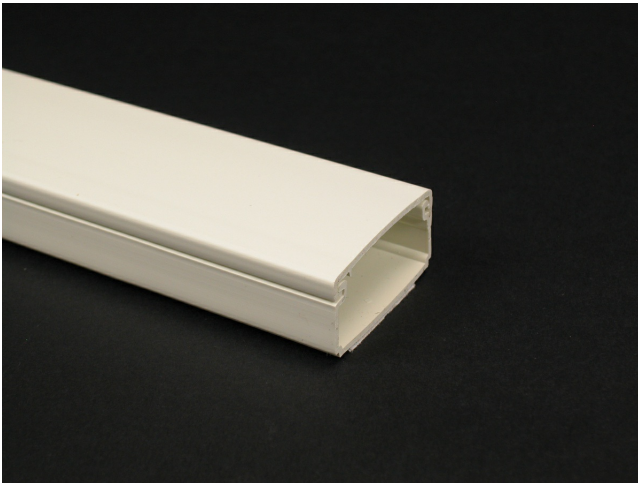




Wiremold  
Eclipse PN05 Latching Raceway Fitting  
Part No. PN05L10V



PN5 Series One-piece latching raceway with co-extruded hinge and adhesive backing. Available in 10' (3.0m) lengths.

## Features & Benefits

This product meets the material restrictions of RoHS

## Specifications

### General Info

|                   |               |                    |                        |
|-------------------|---------------|--------------------|------------------------|
| Product Line      | Wiremold      | UPC Number         | 786776168884           |
| Country Of Origin | United States | Application Sector | Residential/Commercial |

|          |   |      |         |
|----------|---|------|---------|
| Standard | cULus Listed Raceway: File E90378 Guide RJTX. Complies with flammability requirements of UL-5A. Fittings: File E90377 Guide RJYT. Meets Article 388 of NEC. UL Listed for up to 600V. Meets Section 12-2600 of CEC. | Type | Raceway |
|----------|---|------|---------|

### Dimensions

|                   |           |                   |          |
|-------------------|-----------|-------------------|----------|
| Product Width US  | 1.125 in  | Product Height US | 0.625 in |
| Product Length US | 118.11 in |                   |          |

### Listing Agencies / 3rd Party Agencies

|                     |        |              |     |
|---------------------|--------|--------------|-----|
| cULus ListingNumber | E90378 | cULus Listed | Yes |
|---------------------|--------|--------------|-----|

---

## Buy American Act Compliance

---

NAFTA Yes

---

## Additional Information

---

RoHS Conformant Yes Product Environmental Profile Yes

---

## Technical Information

---

Voltage 600.0 V

---