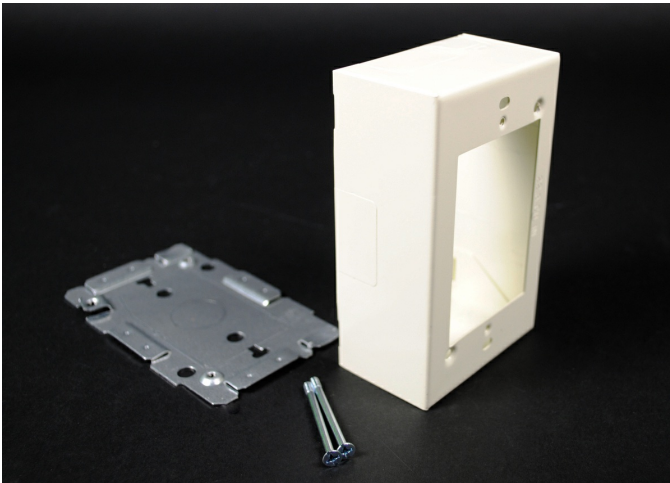




Wiremold
Wiremold 2000 Series Single-Gang Device Box Fitting, Ivory
Part No. V2048



The Wiremold 2000 Series raceway offers a selection of steel, aluminum, and nonmetallic raceways that provide a versatile solution for many applications. Plugmold sections offer single or alternating circuits, in standard or isolated ground receptacles. The ScuffCoat finish is scratch resistant and protects against nicks and chips while preventing color from fading.

Features & Benefits

This product meets the material restrictions of RoHS

Specifications

General Info

| | | | |
|--------------------|---------------|-------------------------|---|
| Product Line | Wiremold | Replaced by Part Number | CV2048 |
| Color | Ivory | UPC Number | 786776037449 |
| Country Of Origin | United States | Number of Receptacles | 0 |
| Application Sector | Commercial | Standard | cULus Listed Surface Metal Raceway: File E41751: Guide RJPR |
| Type | Plugmold | | |

Dimensions

| | | | |
|-------------------|-------------|-------------------|---------|
| Product Width US | 4.5 in | Product Weight US | 0.52 lb |
| Product Volume US | 25.38 cu in | Product Depth US | 1.88 in |
| Product Height US | 3.0 in | | |

Buy American Act Compliance

| | |
|-------|-----|
| NAFTA | Yes |
|-------|-----|

Additional Information

| | | | |
|-----------------|-----|-------------------------------|-----|
| RoHS Conformant | Yes | Product Environmental Profile | Yes |
|-----------------|-----|-------------------------------|-----|

Technical Information

| | | | |
|----------------|-------|---------|---------|
| Enclosure Type | Steel | Voltage | 300.0 V |
|----------------|-------|---------|---------|

| | |
|--------------------------|------------------------|
| Environmental Conditions | Dry interior locations |
|--------------------------|------------------------|
