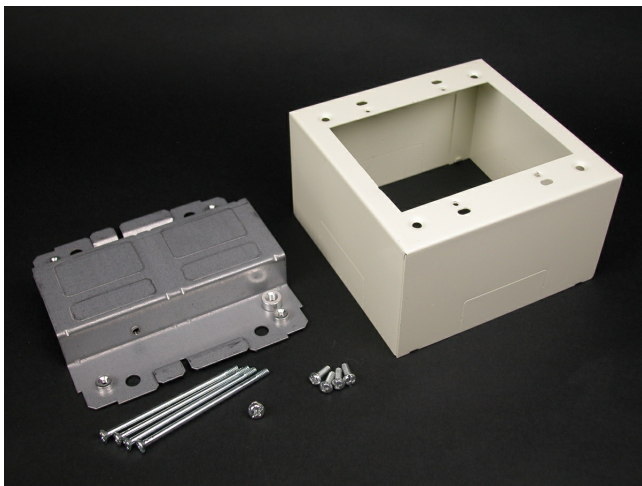




Wiremold
2400 Device Box Fitting
Part No. 2444-2LSFW



Two-gang, labor-saving, over-the-raceway device box. Cover has twistout on all four sides for 2400 Series Raceway. Accepts industry standard faceplates for electrical and communication devices. NOTE: Accepts NEMA double-gang standard faceplates. Certified to Canadian Safety Standards for sale in Canada. When ordering this product for Canada, add "C" to the beginning of the part number to denote Canadian versions, i.e. "CV2444" or "C2444-FW".

Features & Benefits

Two-gang, labor-saving, over-the-raceway device box. Cover has twistout on all four sides for 2400 Series Raceway. Accepts industry standard faceplates for electrical and communication devices. NOTE: Accepts NEMA double-gang standard faceplates. Certified to Canadian Safety Standards for sale in Canada. When ordering this product for Canada, add "C" to the beginning of the part number to denote Canadian versions, i.e. "CV2444" or "C2444-FW".

Specifications

General Info

Product Line	Wiremold	Replaced by Part Number	C2444-2LSFW
UPC Number	786776132465	Country Of Origin	United States
Application Sector	Residential/Commercial	Standard	cULus Listed Raceway: File E4376 Guide RJBT. Fittings: File E41751 Guide RJPR. Base & Blank Cover: Meets Article 386 of NEC. Meets Section 12-600 of CEC.
Type	Raceway		

Dimensions

Product Width US	4.75 in	Product Height US	2.75 in
Product Length US	4.75 in		

Additional Information

RoHS Conformant

Yes

Product Environmental Profile

Yes

Technical Information

Voltage

600.0 V