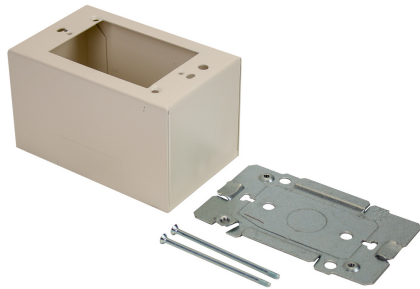




Wiremold
2400 Extra Deep Device Box Fitting
Part No. 2444-FW



One-gang device box with extra depth to allow installation of cabling that requires greater bend radius and storage. Cover has one twistout for 2400 Series Raceway on each side and one twistout for 500 and 700 Series Raceway on the top and bottom. Accepts industry standard faceplates for electrical and communication devices. NOTE: Accepts NEMA single-gang standard faceplates. Certified to Canadian Safety Standards for sale in Canada. When ordering this product for Canada, add "C" to the beginning of the part number to denote Canadian versions, i.e. "CV2444" or "C2444-FW".

Features & Benefits

One-gang device box with extra depth to allow installation of cabling that requires greater bend radius and storage. Cover has one twistout for 2400 Series Raceway on each side and one twistout for 500 and 700 Series Raceway on the top and bottom. Accepts industry standard faceplates for electrical and communication devices. NOTE: Accepts NEMA single-gang standard faceplates. Certified to Canadian Safety Standards for sale in Canada. When ordering this product for Canada, add "C" to the beginning of the part number to denote Canadian versions, i.e. "CV2444" or "C2444-FW".

Specifications

General Info

Product Line	Wiremold	Replaced by Part Number	C2444-FW
UPC Number	786776132434	Country Of Origin	United States
Application Sector	Residential/Commercial	Standard	cULus Listed Raceway: File E4376 Guide RJBT. Fittings: File E41751 Guide RJPR. Base & Blank Cover: Meets Article 386 of NEC. Meets Section 12-600 of CEC.
Type	Raceway		

Dimensions

Product Width US	2.875 in	Product Height US	2.75 in
Product Length US	4.625 in		

Additional Information

RoHS Conformant	Yes	Product Environmental Profile	Yes
-----------------	-----	-------------------------------	-----

Technical Information

Voltage	600.0 V
---------	---------
