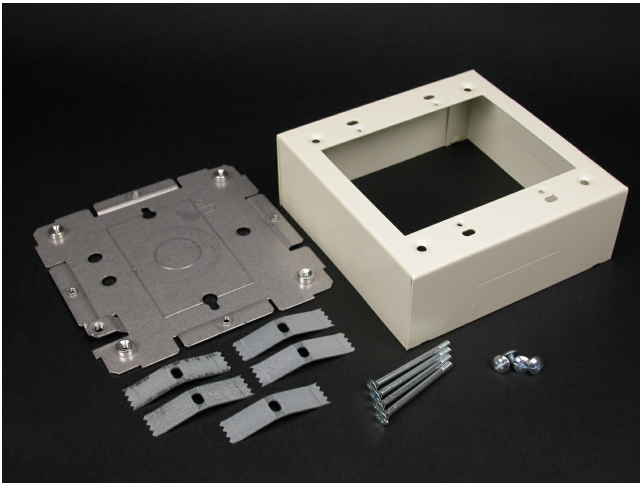




Wiremold  
2400 Device Box Fitting  
Part No. 2448-2FW



Two-gang device box. Cover has twistouts on all four sides for 2400 Series Raceway. Base has knockout to enable extension from existing single-gang, flush wall box and 1/2" trade size KOs. Accepts industry standard faceplates for electrical and communication devices. NOTE: Accepts NEMA double-gang standard faceplates. Certified to Canadian Safety Standards for sale in Canada. When ordering this product for Canada, add "C" to the beginning of the part number to denote Canadian versions, i.e. "CV2444" or "C2444-FW".

## Features & Benefits

Two-gang device box. Cover has twistouts on all four sides for 2400 Series Raceway. Base has knockout to enable extension from existing single-gang, flush wall box and 1/2" trade size KOs. Accepts industry standard faceplates for electrical and communication devices. NOTE: Accepts NEMA double-gang standard faceplates. Certified to Canadian Safety Standards for sale in Canada. When ordering this product for Canada, add "C" to the beginning of the part number to denote Canadian versions, i.e. "CV2444" or "C2444-FW".

## Specifications

### General Info

Product Line	Wiremold	Replaced by Part Number	C2448-2FW
UPC Number	786776132496	Country Of Origin	United States
Application Sector	Residential/Commercial	Standard	cULus Listed Raceway: File E4376 Guide RJBT. Fittings: File E41751 Guide RJPR. Base & Blank Cover: Meets Article 386 of NEC. Meets Section 12-600 of CEC.
Type	Raceway		
Dimensions			
Product Width US	4.75 in	Product Height US	1.75 in
Product Length US	4.75 in		

---

## Additional Information

---

RoHS Conformant

Yes

Product Environmental Profile Yes

---

## Technical Information

---

Voltage

600.0 V

---