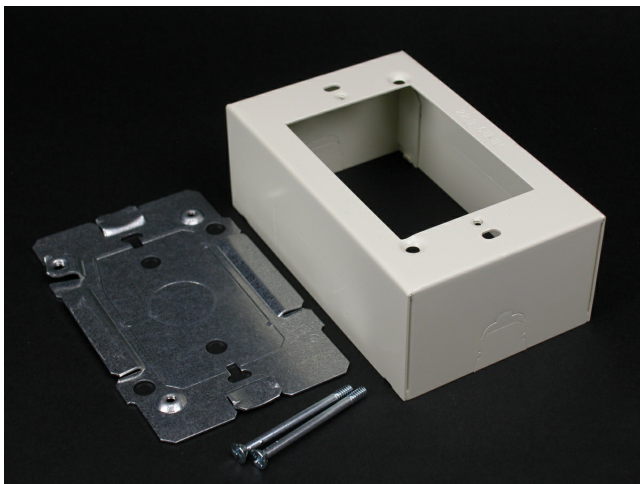




Wiremold
2400 Device Box Fitting
Part No. 2448-FW



One-gang device box. Cover has twistout for 2400 Series Raceway on each side, and one twistout for 500 and 700 Series Raceway on the top and bottom. Base has knockout to enable extension from existing single-gang, flush wall box and 1/2" trade size KOs. Accepts industry standard faceplates for electrical and communication devices. NOTE: Accepts NEMA single-gang standard faceplates. Certified to Canadian Safety Standards for sale in Canada. When ordering this product for Canada, add "C" to the beginning of the part number to denote Canadian versions, i.e. "CV2444" or "C2444-FW".

Features & Benefits

One-gang device box. Cover has twistout for 2400 Series Raceway on each side, and one twistout for 500 and 700 Series Raceway on the top and bottom. Base has knockout to enable extension from existing single-gang, flush wall box and 1/2" trade size KOs. Accepts industry standard faceplates for electrical and communication devices. NOTE: Accepts NEMA single-gang standard faceplates. Certified to Canadian Safety Standards for sale in Canada. When ordering this product for Canada, add "C" to the beginning of the part number to denote Canadian versions, i.e. "CV2444" or "C2444-FW".

Specifications

General Info

Product Line	Wiremold	Replaced by Part Number	C2448-FW
UPC Number	786776132489	Country Of Origin	United States

Application Sector	Residential/Commercial	Standard	cULus Listed Raceway: File E4376 Guide RJBT. Fittings: File E41751 Guide RJPR. Base & Blank Cover: Meets Article 386 of NEC. Meets Section 12-600 of CEC.
--------------------	------------------------	----------	---

Type	Raceway
------	---------

Dimensions

Product Width US	4.625 in	Product Height US	1.75 in
Product Length US	2.875 in		

Additional Information

RoHS Conformant	Yes	Product Environmental Profile	Yes
-----------------	-----	-------------------------------	-----

Technical Information

Voltage	600.0 V
---------	---------
