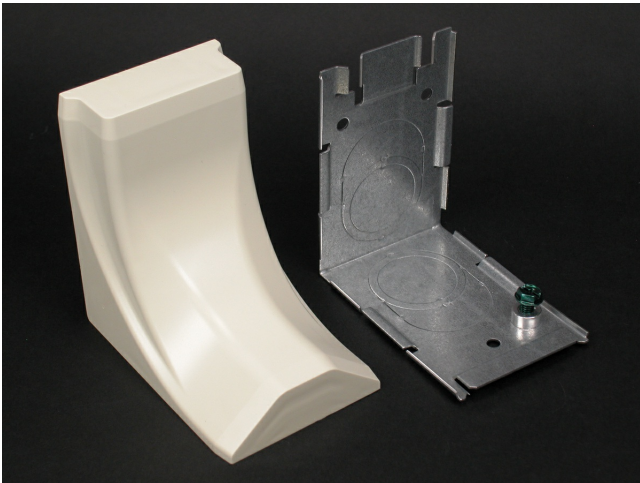




Wiremold
2400 Transition Feed Fitting
Part No. 2686FO



Eliminates need to offset 2400 Series Raceway when connecting with surface panel boxes. Has 3/4" and 1" concentric trade size KOs with 1" trade size KO elongated so adjustment from surface to center of bushing is 1" (25mm) minimum to 1 5/8" (41mm) maximum. Has twistouts for transition to 1500 and 2600 Pancake Raceways.

Features & Benefits

Eliminates need to offset 2400 Series Raceway when connecting with surface panel boxes. Has 3/4" and 1" concentric trade size KOs with 1" trade size KO elongated so adjustment from surface to center of bushing is 1" (25mm) minimum to 1 5/8" (41mm) maximum. Has twistouts for transition to 1500 and 2600 Pancake Raceways.

Specifications

General Info

Product Line	Wiremold	UPC Number	786776170535
Country Of Origin	United States	Application Sector	Residential/Commercial
Standard	cULus Listed Raceway: FileE4376 Guide RJBT. Fittings: File E41751 Guide RJPR. Base & Blank Cover: Meets Article 386 of NEC. Meets Section 12-600 of CEC.	Type	Raceway

Dimensions

Product Width US	2.5 in	Product Height US	3.625 in
------------------	--------	-------------------	----------

Listing Agencies / 3rd Party Agencies

cULus ListingNumber	E41751	cULus Listed	Yes
---------------------	--------	--------------	-----

Buy American Act Compliance

NAFTA	Yes
-------	-----

Additional Information

RoHS Conformant	Yes	Product Environmental Profile	Yes
-----------------	-----	-------------------------------	-----

Technical Information

Voltage	600.0 V
---------	---------
