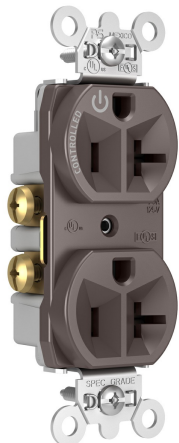




Pass and Seymour  
20A 125V Half-Controlled Plug Load Duplex Receptacle, Brown  
Part No. 5362CH



Permanent controlled receptacle marking allows for long-lasting, easy identification of controlled receptacle for end-users. NEMA-approved and compliant with 2014 NEC, CA Title 24, and ASHRAE Energy Efficiency Standard 90.1.

## Features & Benefits

- Can be wired to any number of system-based or stand-alone plug load control solutions.
- Two drive screws anchor strap to back body and face where abrupt removal torque is greatest.
- Corrosion-resistant, plated and tabbed steel strap locked in to face and back body to resist pulling away from face/body assembly.
- .032 inch thick, brass, triple-wipe power contacts for lasting retention.
- Easily accessed break-off, line-contact connecting tab for fast, easy split-circuit wiring.
- Impact-resistant nylon face.
- Terminal compartments isolated from each other for positive conductor containment.
- Tri-drive terminal and mounting screws.
- Auto-ground clip assures positive ground.

## Specifications

### General Info

Product Line	Pass & Seymour	Color	Brown
Country Of Origin	Mexico	Number of Receptacles	2
Outlet Type	Commercial, Energy Saving On/Off, Indoor	Warranty Type	1-Year Limited Warranty
Type	Outlet		

### Dimensions

Product Width US	1.32 in	Product Depth US	0.78 in
------------------	---------	------------------	---------

---

Product Height US 2.635 in

---

Listing Agencies / 3rd Party Agencies

---

cULus Listed Yes

---

Technical Information

---

Amperage	20 A	Number of Poles	Double Pole
Indoor/Outdoor	Indoor	Voltage	125.0 V

---