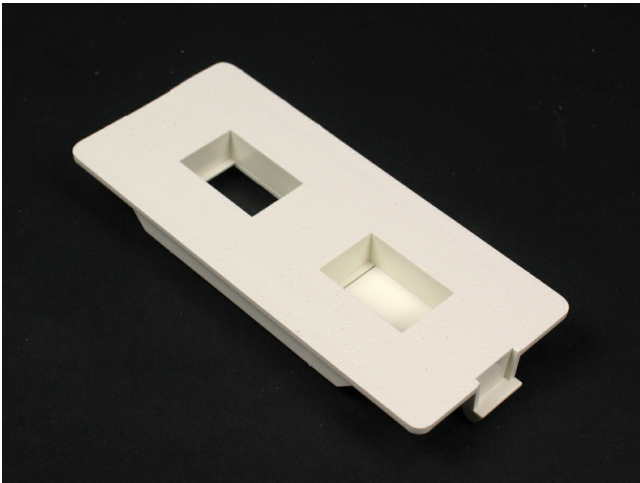




Wiremold
5500 Flush Dual RJ Connector Faceplate Fitting
Part No. 5507FRJ-FW



For mounting one or two keystone device modules, recessed to provide a flush installation. Has one opening and one KO.

Features & Benefits

For mounting one or two keystone device modules, recessed to provide a flush installation. Has one opening and one KO.

Specifications

General Info

Product Line	Wiremold	UPC Number	786776138245
Country Of Origin	United States	Application Sector	Residential/Commercial

Standard	cULus Listed Raceway: File E90378 Guide RJTX. Complies with flammability requirements of UL-5A. Fittings: File E90377 Guide RJYT. Meets Article 388 of NEC. UL Listed for up to 600V. Meets Section 12-1600 of CEC.	Type	Raceway
----------	---	------	---------

Dimensions

Product Width US	1.875 in	Product Length US	4.224 in
------------------	----------	-------------------	----------

Listing Agencies / 3rd Party Agencies

cULus ListingNumber	E90377	cULus Listed	Yes
---------------------	--------	--------------	-----

Buy American Act Compliance

NAFTA	Yes
-------	-----

Additional Information

RoHS Conformant	Yes	Product Environmental Profile	Yes
-----------------	-----	-------------------------------	-----

Technical Information

Voltage	600.0 V
---------	---------
