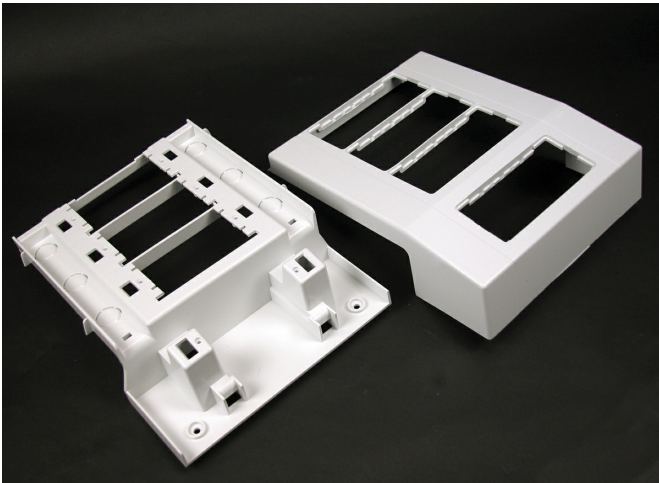




Wiremold  
5500 Offset Mounting Device Bracket Fitting  
Part No. 5550A4WH



For mounting up to four power and communication devices at one location. Utilizes 5507 Series Faceplates, Wiremold Open System communication modules, Ortronics TracJack and Series II inserts, and Pass and Seymour Activate Series inserts. For faceplate options, see 5507 Series Faceplates. NOTE: CM-EPLA End Plates are required when using Wiremold communication modules and Pass and Seymour Activate inserts. S2-EPL End Plates are required when using Ortronics Series II inserts. To mount TracJack inserts, use 5507-4TJ or 5507-6TJ Faceplates.

## Features & Benefits

For mounting up to four power and communication devices at one location. Utilizes 5507 Series Faceplates, Wiremold Open System communication modules, Ortronics TracJack and Series II inserts, and Pass and Seymour Activate Series inserts. For faceplate options, see 5507 Series Faceplates. NOTE: CM-EPLA End Plates are required when using Wiremold communication modules and Pass and Seymour Activate inserts. S2-EPL End Plates are required when using Ortronics Series II inserts. To mount TracJack inserts, use 5507-4TJ or 5507-6TJ Faceplates.

## Specifications

### General Info

Product Line	Wiremold	UPC Number	786776059168
Country Of Origin	United States	Application Sector	Residential/Commercial
Standard	cULus Listed Raceway: File E90378 Guide RJTX. Complies with flammability requirements of UL-5A. Fittings: File E90377 Guide RJYT. Meets Article 388 of NEC. UL Listed for up to 600V. Meets Section 12-1600 of CEC.	Type	Raceway

### Dimensions

Product Depth US	2.5 in	Product Height US	9.625 in
Product Length US	7.5 in		

### Listing Agencies / 3rd Party Agencies

cULus ListingNumber	E90377	cULus Listed	Yes
---------------------	--------	--------------	-----

Buy American Act Compliance

NAFTA	Yes
-------	-----

Additional Information

RoHS Conformant	Yes	Product Environmental Profile	Yes
-----------------	-----	-------------------------------	-----

Technical Information

Voltage	600.0 V
---------	---------