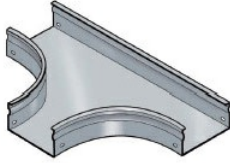


Cablofil Fiber Trough utilizes high strength steel components to provide the strength and durability required to manage fiber cabling requirements in the most demanding data center environments.



## Features & Benefits

Strong corrosion-resistant steel.

Rolled edge: for cable protection.

Tool-less, snap on design.

18 gage steel.

## Specifications

### General Info

Product Line	Cablofil	Finish	Custom Painted
UPC Number	800388242555	Country Of Origin	Italy

### Dimensions

Product Width US	3.9 in	Product Weight US	0.6 lb
Product Volume US	0.027 cu ft	Product Depth US	5.9 in
Product Height US	2.0 in		

### Buy American Act Compliance

BAA	Yes
-----	-----