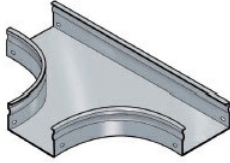


Cablofil Fiber Trough utilizes high strength steel components to provide the strength and durability required to manage fiber cabling requirements in the most demanding data center environments.



Features & Benefits

Strong corrosion-resistant steel.

Rolled edge: for cable protection.

Tool-less, snap on design.

18 gage steel.

Specifications

General Info

| | | | |
|--------------|--------------|-------------------|----------------|
| Product Line | Cablofil | Finish | Custom Painted |
| UPC Number | 800388242579 | Country Of Origin | Italy |

Dimensions

| | | | |
|-------------------|-------------|-------------------|---------|
| Product Width US | 13.0 in | Product Weight US | 3.0 lb |
| Product Volume US | 0.272 cu ft | Product Depth US | 18.1 in |
| Product Height US | 2.0 in | | |

Buy American Act Compliance

| | |
|-----|-----|
| BAA | Yes |
|-----|-----|