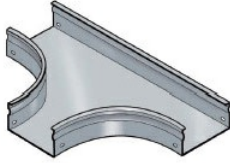


Cablofil Fiber Trough utilizes high strength steel components to provide the strength and durability required to manage fiber cabling requirements in the most demanding data center environments.



Features & Benefits

Strong corrosion-resistant steel.

Rolled edge: for cable protection.

Tool-less, snap on design.

18 gage steel.

Specifications

General Info

Product Line	Cablofil	Finish	Custom Painted
UPC Number	800388242586	Country Of Origin	Italy

Dimensions

Product Width US	16.9 in	Product Weight US	4.7 lb
Product Volume US	0.43 cu ft	Product Depth US	22.0 in
Product Height US	2.0 in		

Buy American Act Compliance

BAA	Yes
-----	-----