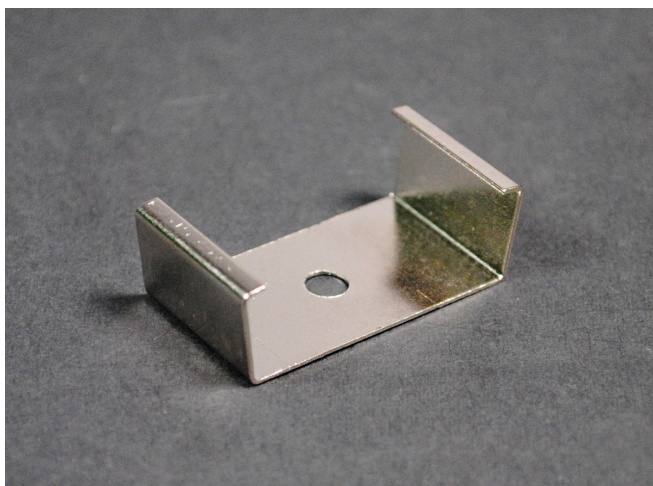




Wiremold  
AL2000 Mounting Clip (Spring Steel)  
Part No. AL2003



Supports lengths of AL2000 Raceway at any point desired. Mount to surface with No. 8 flathead screw.

## Features & Benefits

Supports lengths of AL2000 Raceway at any point desired. Mount to surface with No. 8 flathead screw.

## Specifications

### General Info

Product Line	Wiremold	UPC Number	786776038866
Country Of Origin	United States	Application Sector	Commercial

Standard	cULus Listed Raceway: File E4376 Guide RJPR. Fittings: File E41751 Guide RJPR. Raceway & Fittings: Meet Article 386 of NEC. Multioutlet Assemblies: Meet Article 380 of NEC. cULus Listed Raceway: File E4376 Guide RJBT. Multioutlet Assemblies: File E15191 Guide PVGT. Fittings: File E41751 Guide RJPR. Base & Blank Cover: Meets Article 386 of NEC. Plugmold Strips: Meets Article 380 of NEC.	Type	Plugmold
----------	--	------	----------

### Listing Agencies / 3rd Party Agencies

cULus ListingNumber	E41751	cULus Listed	Yes
---------------------	--------	--------------	-----

### Buy American Act Compliance

NAFTA	Yes
-------	-----

---

Additional Information

---

RoHS Conformant	Yes	Product Environmental Profile	Yes
-----------------	-----	-------------------------------	-----

---

Technical Information

---

Amperage	15 A	Enclosure Type	Aluminum
Voltage	120.0 V	Environmental Conditions	Dry interior locations

---