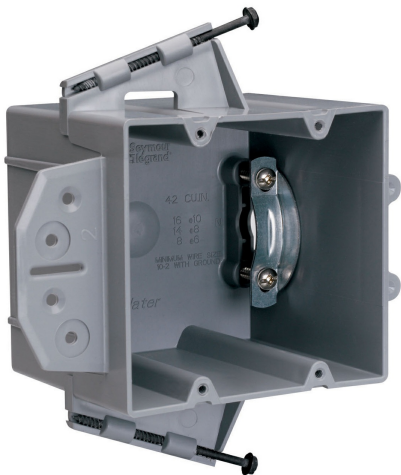




Pass and Seymour
Range and Dryer Box
Part No. P242SRD



Range or Dryer Box with captive Mounting Screws on Each End. 1/2-inch offset for wood or steel stud mounting with metal cable clamp. 12 pack.

Features & Benefits

- Auto/Clamps on each end eliminate the need for separate cable clamps.
- Easy installation, rectangular cutout.
- Location ribs enable the installer to quickly and accurately maintain a 1/2 inch offset.
- Constructed of impact-resistant thermoplastic.

Specifications

General Info

Product Line	Pass & Seymour	Color	Gray
Country Of Origin	United States	Standard	Residential/Commercial

Dimensions

Product Width US	4.0 in	Product Depth US	4.0 in
Product Length US	3.75 in	Cubic Capacity	42 cu in