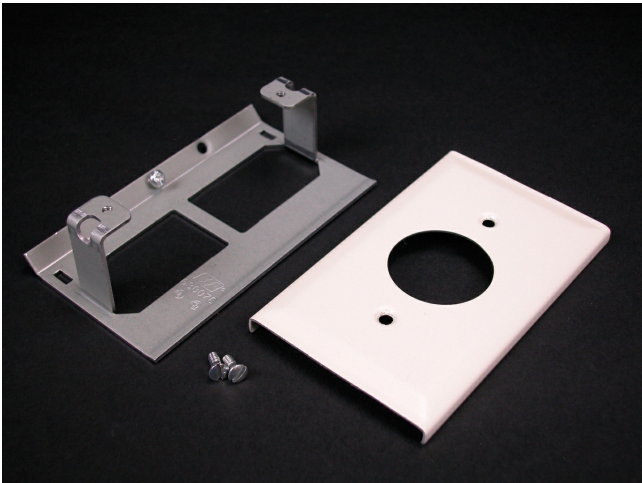




Wiremold
3000 Single Receptacle Cover Fitting
Part No. V3027AE



Installs commercially available straight blade and locking single receptacles with face diameters of 1.38" - 1.40" (35mm - 36mm) into 3000 Series Raceway. G3007C Device Bracket included. NOTE: Certified to Canadian Safety Standards for sale in Canada. When ordering these products, change the "V" color prefix to "CV" or the "G" color prefix to "CG" to denote the Canadian versions.

Features & Benefits

Installs commercially available straight blade and locking single receptacles with face diameters of 1.38" - 1.40" (35mm - 36mm) into 3000 Series Raceway. G3007C Device Bracket included. NOTE: Certified to Canadian Safety Standards for sale in Canada. When ordering these products, change the "V" color prefix to "CV" or the "G" color prefix to "CG" to denote the Canadian versions.

Specifications

General Info

Product Line	Wiremold	UPC Number	786776105391
Country Of Origin	United States	Application Sector	Commercial
Standard	cULus Listed Raceway:File E4376 Guide RJBT. Fittings: File E41751 Guide RJPR. Base & Blank Cover: Meets Article 386 of NEC. Meets Section 12-600 of CEC.	Type	Raceway

Dimensions

Product Length US 4.5 in

Buy American Act Compliance

NAFTA Yes

Additional Information

RoHS Conformant Yes

Product Environmental Profile Yes

Technical Information

Voltage	600.0 V
---------	---------
