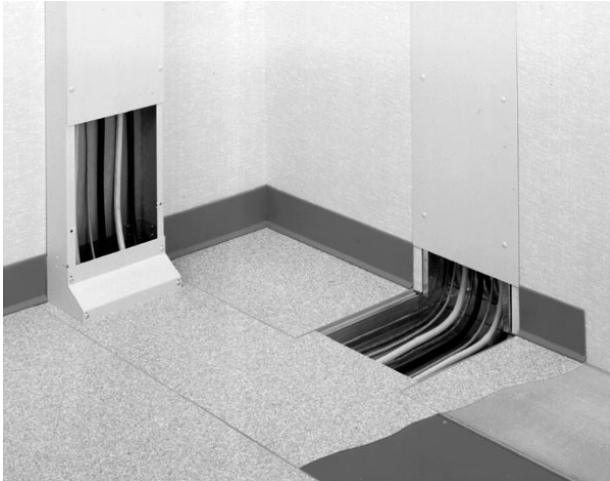




Wiremold
WD 18INW 31/2IND T W/SWEEP CORNER
Part No. WD18W350-T-RADI



Wallduct is commonly used in the healthcare market to feed wires and cables from electric and communication cabinets to X-ray and MRI equipment. See typical application shown. Because some healthcare equipment requires nonmetallic material in the surrounding area, aluminum Wallduct is used in scan rooms. The equipment and control rooms generally use steel Wallduct.

Specifications

General Info

Product Line	Wiremold	Country Of Origin	United States
--------------	----------	-------------------	---------------

Listing Agencies / 3rd Party Agencies

cULus ListingNumber	E41751	cULus Listed	Yes
---------------------	--------	--------------	-----

Additional Information

RoHS Conformant	Yes
-----------------	-----