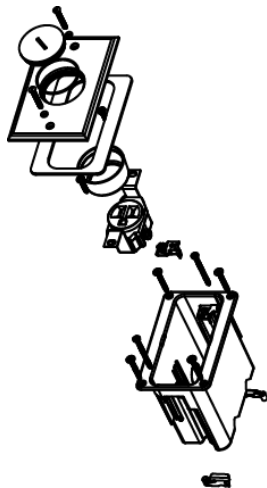




Wiremold
WMFB1SRN Series Single-Gang Floor Box Assembly
Part No. WMFB1SRN



Includes single-gang box, one 15A tamper-resistant receptacle, and nickel cover with one screw plug. For hole cut dimensions, see installation instructions sheet. Box Dimensions: 2 1/8" W x 3 3/4" L x 3 7/8" D (54mm W x 95mm L x 98mm D) Device Plate: 3 1/8" W x 4 15/16" L (79mm W x 125mm L).

Features & Benefits

Includes single-gang box, one 15A tamper-resistant receptacle, and nickel cover with one screw plug. For hole cut dimensions, see installation instructions sheet. Box Dimensions: 2 1/8" W x 3 3/4" L x 3 7/8" D (54mm W x 95mm L x 98mm D) Device Plate: 3 1/8" W x 4 15/16" L (79mm W x 125mm L).

Specifications

General Info

| | | | |
|--------------------|------------------------|--------------|---|
| Product Line | Wiremold | UPC Number | 786564053934 |
| Country Of Origin | China | Construction | Not Assembled |
| Application Sector | Residential/Commercial | Standard | cULus Listed Nonmetallic Outlet Boxes: File E143222 Guide QCMZ. Meets Article 314.27(C) of NEC. |
| Type | Floor Box | | |

Dimensions

| | | | |
|------------------|----------|------------------|----------|
| Product Width US | 2.125 in | Product Depth US | 3.875 in |
|------------------|----------|------------------|----------|

Listing Agencies / 3rd Party Agencies

| | | | |
|---------------------|---------|--------------|-----|
| cULus ListingNumber | E143222 | cULus Listed | Yes |
|---------------------|---------|--------------|-----|

Additional Information

| | |
|-----------------|-----|
| RoHS Conformant | Yes |
|-----------------|-----|

Technical Information

| | | | |
|-------------|---------------|-------------------|---|
| Cable Entry | Through Floor | Number of Outlets | 1 |
|-------------|---------------|-------------------|---|
