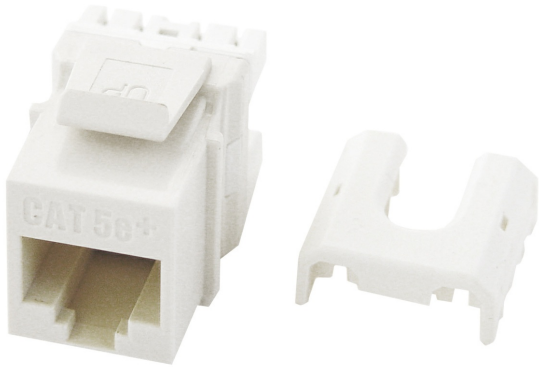




On-Q
Discontinued - CAT5E RJ45 KEYSTONE INSERTS(25)-WHT, NO SUB
Part No. WP3450WHV9



The vertical design of this high quality insert makes punchdown termination easy. The insert is for use in all Keystone wall plates and is available in multiple colors, as well as convenient contractor packs.

Features & Benefits

Ensures Category 6 performance standard compliance	Rear retention caps ensure secure wire termination
Vertical design for easy punchdown termination	T568A and T568B wiring labels included
Meets Category 5e described in TIA/EIA-568-B.2	Insertion and extraction life is 750 Cycles Min
Jack housing is high-impact, flame resistant plastic, UL 94V-0	Spring wire is phosphor bronze alloy plated with 50 micro-inch of gold over 100 micro-inches of nickel
Also available in contractor pack of 50 (WP3450-WH-50)	

Specifications

General Info

Product Line	On-Q	Color	White
UPC Number	804428031710	Country Of Origin	Taiwan, Province Of China
Package Quantity	25	Application Sector	Residential
Standard	CSA, cULus, RoHS, ANSI/UL 1863, Flame-Retardant Plastic UL 94V-0		

Technical Information

Termination Style	Punchdown	Cable Type	Cat 5e
-------------------	-----------	------------	--------

Environmental Conditions	0 to 93% (relative humidity, non-condensing)
--------------------------	--
